



Fendi Glass Tunnel, Italy  
Peter Marino Architect, NY

Crystal Cognac glass, tempered vertical panels, tempered/laminated ceiling panels with Dorma sliding hardware.



Nathan Allan  
Glass Studios Inc.



With your first step into Tiffany's, Shanghai, their displays greet you with a seraphic glow. The subtle showcase provides a delicate backdrop for their jewelry – the pinnacle of tasteful elegance.

Opaque white color floats upwards, gradually integrating with a white **Firefrost** finish, while dissipating the hot light source. The glowing streams of illumination travel up each fluted **Cathedral** channel. The store's façade continues this sleek effect, by using a bronze tinted glass.

**CLIENT** Tiffany & Co  
**ARCHITECT** Kingsmen Hong Kong Ltd  
**DESIGN** S. Russell Groves





A first of its kind, **Convex** panels of individual quilted glass pillows, rectangular shaped, are displayed in this high-end facade, specifically designed for Holt Renfrew. The **Convex** shape creates many different lighting effects on both the exterior and interior of this beautiful retail store. **Fire-Frosted** opacity panels provided an elegant facade on the building's skin, while **Clear** panels create a spectacular display and phenomenal view.

Approximately 100 sets of panels were produced, in various sizes up to, and exceeding, 6' x 10'.

**CLIENT** Holt Renfrew, Vancouver, BC

**ARCHITECT** Janson Goldstein and Front Inc, NY

**INSTALLER** Inland Glass, BC and Glastech, BC

Photo: Michael Desjardins Photography



When French luxury jeweler Mauboussin approached Rockwell Group, the prestigious design firm selected Nathan Allan Glass Studios Inc. to create a feature wall that would unify three floors of the store's showcases. Working with Rockwell's designers, we developed a dazzling new product that calls to mind the chiseled surfaces of diamonds — **Crackle Glass**.

The 12' x 30' high wall consists of glass in fractured forms that resembles cracked ice. Crackle panels are laminated to a background mirror which reflects intense lighting and creates a brilliant jewelled surface.

**CLIENT** Mauboussin, NY  
**ARCHITECT** Rockwell Group, NY  
**INSTALLER** Aval

Photo: Bärbel Miebach



18 panels of 6'x6' in Willow pattern are pinned to a back wall, creating a dynamic backdrop. The iridescent sparkle of **Gemstone Cobalt Blue** color finish is revealed with front lighting.

**CLIENT**

Hayden Ferry Lakeside LLC, AZ

**INTERIOR ARCHITECT**

Callison

**LOBBY GLASS SELECTION**

Richard Drinkwater w/DAVIS

**INSTALLER**

B & B Glass, AZ

Photo: Al Payne/A.F. Payne Photographic



3/8" Cascade textured glass, with Cobalt Blue color finish is incorporated into the entrance lobby. Two walls of cast glass, each approx 100' long, and ranging in heights from 16' to 24', are pinned onto a spider clamp support framework.

**CLIENT** Hayden Ferry Lakeside LLC, AZ  
**ARCHITECT** Davis, AZ  
**INSTALLER** B & B Glass, AZ  
Photo: John Hall Photography



20' wide x 30' high, deep **Rain** textured panels simulate an active waterfall. Prismatic layers of film are attached to the back of the panels. **Cobalt Blue** fins form an interesting break line.

**CLIENT** Hyatt Regency, Vancouver, BC  
**DESIGNER** MCM Interiors & CHIL, BC

Photo: Ed White Photography



**Willow** pattern enconces those in the Bridgepoint conference room. The Willow pattern provides a spectacular decorative visual display, creating a high-end, quality feeling for this space. Usable in a frameless application, only hinge notches and handle holes were required for the mounting hardware. Certainly, the client received a "one of a kind", unique product.

**CLIENT** Bridgepoint

**DESIGNER** ID Studios

Photo: Jim Brady

"Impressive" and "overpowering" is what best describes the cast glass used in two separate restaurant entry portals. Covering openings of 7' x 18', 1/2" thick, cast tempered glass is used with Dorma commercial door hardware entry system and framework, supplied by Nathan Allan. Willowy, sweeping custom textures were designed from original molds.

**CLIENT** Westin Diplomat Resort & Spa, FL

**DESIGNER** Hirsch Bedner & Associates, CA

Photo: Mark Surloff Photography



**Cascade XL** pattern creates a floating door panel using commercial sliding hardware.

**CLIENT** Denver News Agency, CO

**ARCHITECT** Newman Cavender & Doane

Photo: Randy Brown





A modern merge of beer bar and upscale eatery, Republic Gastropub offers unique beer, wine, and cocktail drinks from across the globe in a vibrant decor – all while you’re catching your favorite game. The apt choice of clear **Spheres** on glass panels ties into the exuberant atmosphere. Backlit near the booths, the orbs literally pop off the panels in a fizzy glow. The Spheres used as partition walls near the front serve as an “amuse-bouche” for the eyes, as they feast upon the selection beyond.

**CLIENT** Republic Gastropub  
**ARCHITECT** Elliott + Associates  
Photo: Scott McDonald (c) Hedrich Blessing

CHIL designers comment how perfect our Freeform Maze pattern complimented other materials in this fine dining restaurant at the Shangri-La Hotel. Using 3/8” thick clear tempered glass, multiple panels are attached to the ceiling to form an overhead lighting canopy.

**CLIENT** Shangri-La Hotel  
**ARCHITECT** James K.M. Cheng Architects Inc.  
**DESIGN** CHIL Design Group

Photo: Bob Matheson





Swirling custom pattern on multiple panels, using 1/2" thick safety glass, finished in a bright Red glass color appliqué.

**CLIENT** Denver News Agency, CO

**ARCHITECT** Newman Cavender & Doane

Photo (left): Randy Brown

**Aqua** and **Cobalt** colors echo the surrounding waters, and the **Sahara** and **Stream** textures bring nature's energy indoors. **Crystal Series** diffuses the lights without blocking light.

**CLIENT** Chukchansi Casino

**ARCHITECT** Thalden Boyd Emery Architects

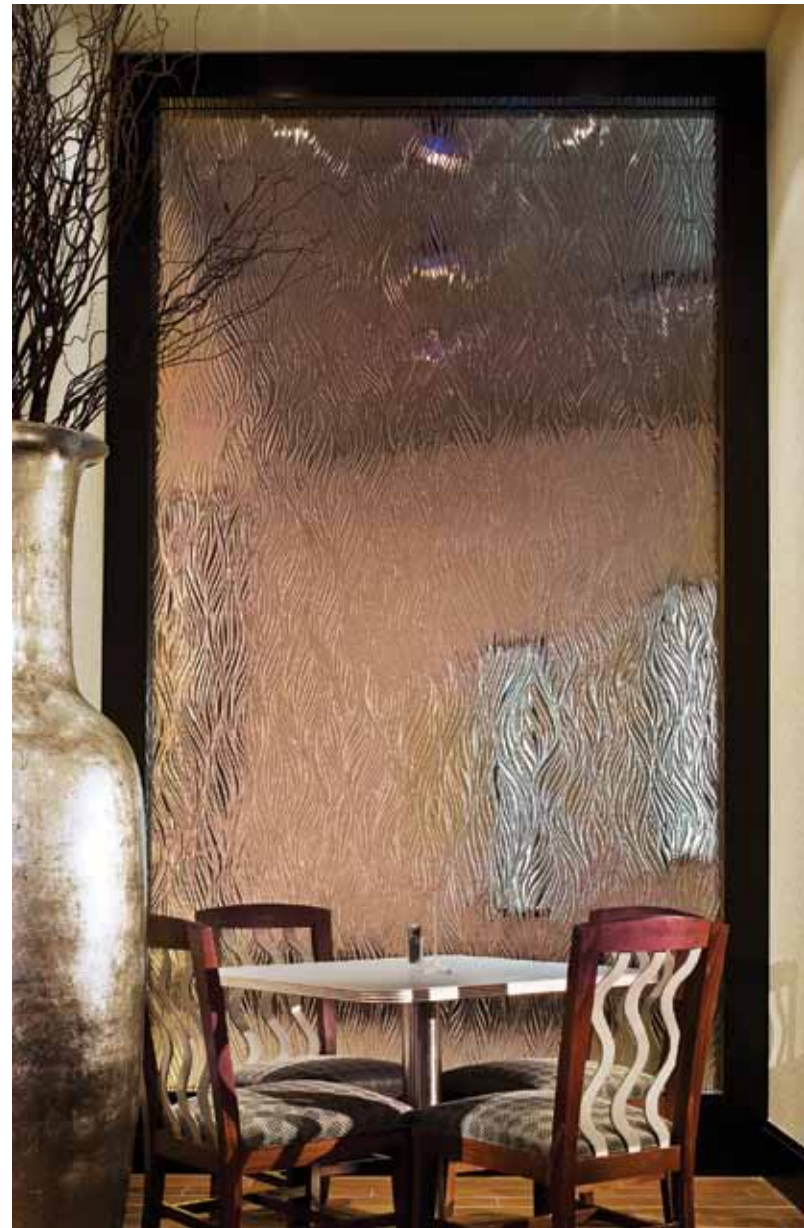
Photo (bottom left): © Mikki Piper

A panel of **Willow Glass** summons a waterfall slipstream, providing translucent privacy for diners of the Waters Café.

**CLIENT** Agua Caliente Casino Resort Spa, Palm Springs, CA

**ARCHITECT** VOA Associates, Orlando, FL

Photo (bottom): © Peter Malinowski/InSite 2008





ABOVE Spiraling pattern of **Sphere** glass panels, using 3 diameters and 3 colors of Spheres, on clear background panels.

CLIENT Denver News Agency, CO  
ARCHITECT Newman Cavender & Doane  
Photo: Randy Brown

RIGHT 24" diameter **Spheres** mounted on 1/2" thick **Low Iron Clear** panels.

CLIENT Mirage Hotel, NV





Various patterns of **Rain**, **Icicle**, **Champagne**, and **Sandstone** glass, provide a fun and decorative element for this children's play area.

**CLIENT** Dell Children's Medical Center

**ARCHITECT** Karlsberger

Photo: John Durant

A custom box design reflects the company's business, using **Natural** and **Sandstone** textures. A frameless appearance is created by inseting within channels.

**CLIENT** Box Packaging

**DESIGNER** Soraya Planning & Design

Photo: Barry Rustin Photography

Florida's iconic palms flutter in continuous partition walls, which provide privacy without dimming light in the reception area, lounges, and offices.

**CLIENT** Leon Medical Centers

**ARCHITECT** MGE Architects

Photo: Robert Stein





This suspended glass bridge is a focal point of effortless buoyancy. The floating bridge spans across this elegant space, without shading those below from the natural skylight above.

Working closely with HLW International, these structurally engineered, elevated flooring panels were designed for maximum safety and durability in this high traffic work space. **Glass Sandpaper**, a trademark Nathan Allan non-slip surface treatment, is used extensively on the walking surface of the glass. Glass Sandpaper is tested by independent labs, and has provided the highest ASTM ratings in our industry, allowing for usage both indoor and outdoors.

**ARCHITECT** HLW International LLP, NY

**CONTRACTOR** General Glass + Metal Inc, NY

Photo: Eric Laignel Photography

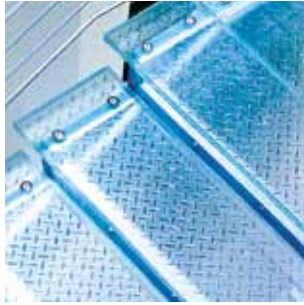
2 layers of 5/8" thick, clear tempered glass, with Nathan Allan's unique brand of **Glass Sandpaper** on the walking surface. Opacity interlayers create privacy while allowing ample light transmission, and creating a whitish glow through the glass. Product is engineered for the specific project.

**CLIENT** University of Utah

**ARCHITECT** Cooper Roberts Simonsen Associates, Salt Lake City, UT

Photo: richerimages.com





80 treads and 20 landings with **Cast Glass Diamondplate** texture. The walking surface has our exclusive **Glass Sandpaper** safety finish on two layers of 5/8" thick, tempered glass. Finished product is engineered and ASTM rated for coefficient of friction testing.

**CLIENT** Big D Construction  
Company Headquarters, UT  
**DESIGNER** Gillies Stransky  
Brems Smith

Photo: Perrenoud Productions

Treads OPTIONS:

- Clear vision
- Opacity (privacy) coating
- Decorative pattern (privacy)
- Color finish

Note: all options automatically come with our exclusive **Glass Sandpaper** safety finish on the walking surface. See the following page for further examples of tread options.





This 26' oval bartop is clad using our **Wave** pattern with 3/4" Low Iron glass and a **Gemstone Red** color finish on the bottom surface. The Wave pattern lines up perfectly from panel to panel, creating an even flow throughout the surface. Low Iron glass allows for a true representation of the **Gemstone Red** color.

**CLIENT** Snoqualmie Casino, Seattle, WA

**ARCHITECT** Leonard Bergman, Bergman Walls & Associates

**DESIGN** Zia Hansen, Red Design Studio, Las Vegas

Photo: © Peter Malinowski/InSite 2008





A 3" thick glasstop greets patrons at the bar. 11' x 2' panels are produced in **Rocky Mountain** texture from our **Heavy Series**. The texture is transparent from the bottom and is equally appreciated on the sides, giving the solid bartop an ethereal appeal.

**CLIENT** Terminal City, BC  
**DESIGNER** SSDG Interior Design  
Photo: Nick Didlick Photography

4" thick blocks of **Heavy Glass** wrap the bartender's station. The 44' long **Wave** pattern continues from panel to panel.

**CLIENT** Naples Grande & Club, FL  
**DESIGNER** Barry Design, LA  
Photo: Brett Drury Architectural Photography, Inc.







A very remarkable combination of **Sphere Glass** laminated with our **Crystal Series** glass; with a **Red** color finish applied over the Crystal surface.

**CLIENT** Eastside Cannery Casino and Hotel

**ARCHITECT** Yates-Silverman Architects

**INSTALLER** Commercial Cabinet Co

Photo: Scott Chaney

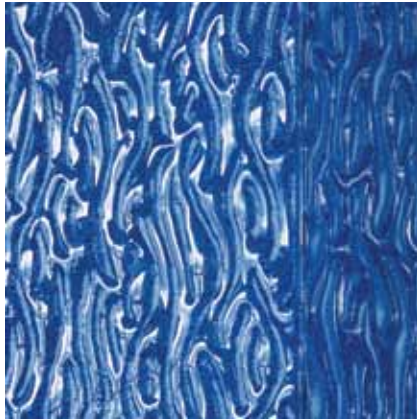
3' x 3' Stax glass panels with **Beamz** pattern has **Amber** color finish and **Mirrored** backing. They are seamed together to form a continuous 30' façade along the front of this lounge and sushi bar. The pattern undulates from 1"–1.5" thick, creating a rippling effect.

**CLIENT** Simon Restaurant & Lounge, Palms Hotel

**ARCHITECT** Rockwell Group, NY

**INSTALLER** Complete Millwork Services, NY

Photo: Jeffrey Green Photography



11' high **Crystal Cobalt** panels form a circular segmented glass column in **Sahara** texture, and glows a brilliant blue during a nighttime setting.

**CLIENT** Eastside Cannery Casino and Hotel

**ARCHITECT** Yates-Silverman Architects

Photo: Scott Chaney





Large panels of 1/2" bent tempered cast glass, 6'x 8', are installed on bronze tubes (also supplied by Nathan Allan). Multiple textures are incorporated into the design, with prismatic accents of **Dichroic** glass. This project displays our ability to provide large cast panels in a bent form, that will meet all safety tempering requirements.

**CLIENT** Hyatt Classic, CA  
**ARCHITECT** Wilson & Associates, TX

Photo: Brett Drury  
Architectural Photography, Inc.



3/8" cast, bent & tempered, **Ripple** patterned glass from our **Freeform Series**. Glass panels are notched on the vertical edges to accept the glass mounting clips.

**CLIENT** Bridgepoint  
**ARCHITECT** ID Studios, San Diego

Photo: Jim Brady





RIGHT 1/2" thick cast glass panels, appropriately created using our **Freeform Stream** pattern, create a shimmering watery effect in front of the river rock wall.

CLIENT **Snoqualmie Casino**, Seattle, WA

ARCHITECT **Leonard Bergman**,  
**Bergman Walls & Associates**

DESIGNER **Bruce de Armond**, **Yates Silverman**, Las Vegas

Photo: © Peter Malinowski/InSite 2008



ABOVE 6' x 18' high waterfall using 1/2" **Sandtide Fine** textured panels. Water flows down the face of the glass, creating a realistic appearance.

CLIENT **Harrison Hot Springs**, BC

DESIGNER **BBA Design**

Photo: Michael Desjardins Photography

RIGHT This waterfall incorporates 1/2" thick tempered glass panels with our **Sandtide Coarse** texture. Each application uses Stainless Steel glass mounting clips provided by Nathan Allan, and is engineered to exceed safety standards.

CLIENT **Tigh Na Mara Resort**, Nanaimo, BC

DESIGNER **Arcon Waterscapes**

Photo: Tigh Na Mara Resort





**TOP** The Marriott Marquis Hotel in Times Square incorporates **Crystal Series** in their elevator lobby. Produced with 1/2" tempered glass, **Sahara** texture, **Cognac** color finish, and illuminating **Crystal Bead** backing, the panels are designed to sparkle when light is applied.

**CLIENT** Marriott Marquis Hotel, NY

**ARCHITECT** BBGM, NY

Photo: Roger Hagadone Photography

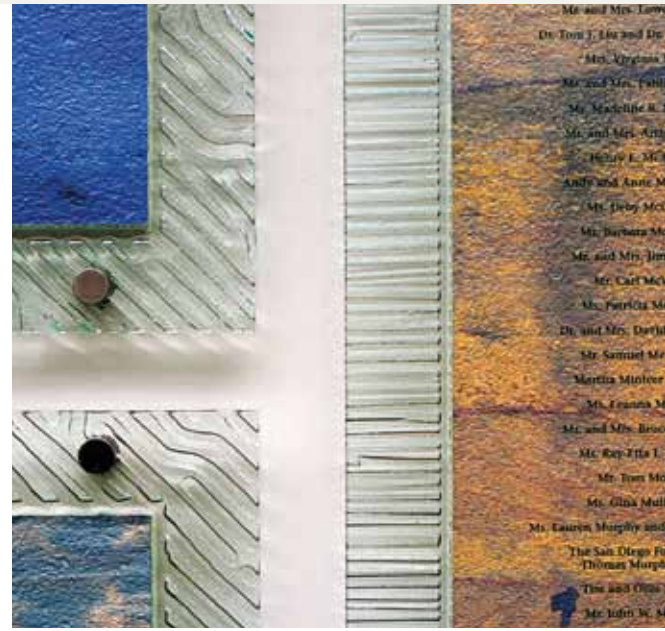
**BOTTOM** **Convex** glass with **White Metallic** color finish enhances the visual appeal of each cab. Greeting each visitor as they exit the cab is a stunning **Fusion** feature wall of prismatic colors in sweeping shapes.

**CLIENT** Res Med

**ARCHITECT** ID Studios

Photo: Hewitt Garrison





Multiple panels of 3/8" cast tempered glass, various textures. Colored panels with donor names are applied to the back of the **Cast Glass** panels. Cast textured surface prevents any fingerprinting.

**CLIENT** Museum of Natural History, CA



11 feet wide and 8 feet high, 5/8" thick tempered **Rocky Mountain** textured cast glass. Our cast glass is pin-mounted to stainless steel support posts, manufactured by Nathan Allan. Sign letters are laser cut from aluminum stock, powder coated and pin-mounted through the glass. Installed by Nathan Allan technicians.

**CLIENT** Mayfair Shopping Centre, Vancouver, BC

**DESIGNER** Maxim Design

**INSTALLER** Imperial Sign Corp

Photo: Imperial Sign Corporation



This cast glass corporate sign is one of the most visible landmarks in downtown Vancouver. The panels are cast in a 3/4" thick tempered safety glass, range up to 7' tall, and span two 30' lengths of bent stainless steel tubing. The aluminum letters are 1/2" thick and pinned through the glass. Letters and logo are powder coated, and all items are illuminated at night with water sealed halogen lights, one positioned below every glass panel. Nathan Allan provided all materials and installation for this project.

**CLIENT** Westin Bayshore, Vancouver, BC

Photo: Michael Desjardins Photography



# Crystal

This sparkling design combines deep texture with Crystal beads. Crystal Series with Sahara texture was produced as an original product for Four Seasons Hotels, to be used as lighting fixtures. The beads illuminate and create a beautiful crystallized glow.

### PORTFOLIO EXAMPLES

Fendi COVER  
Eastside Cannery 16, 17  
Marriott Marquis Hotel 20



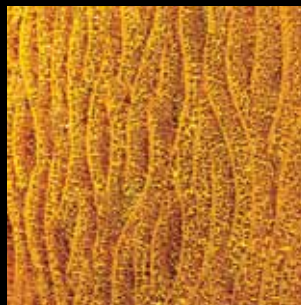
Clear



Red



Copper



Cognac



Green



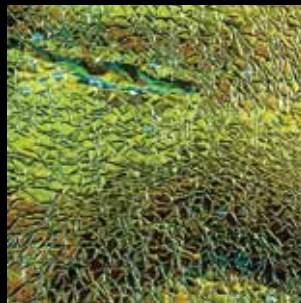
Cobalt

# Fusion

Beautiful, prismatic colored sheets are melted together with clear layers of glass, creating our most vibrant collection to date. Ideal for glasstops, partitions, and column cladding. Please visit our website to view all colors available.

### PORTFOLIO EXAMPLES

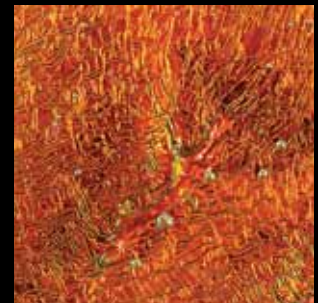
Res Med 20



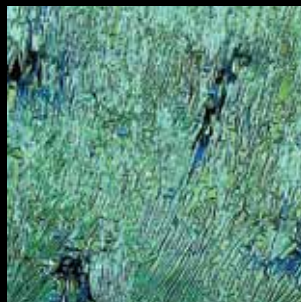
LB



PI



RR



TQ



XR



SR



# Convex

Convex Glass is the first real 3D Glass, produced in geometric-type patterns. Both surfaces are shaped so that dimensional viewing can take place from either side of the glass.

## PORTFOLIO EXAMPLES

Holt Renfrew 2

Res Med 20



Square



Triangle



Circle



Nexus



Honeycomb



Aero



SQUARE, SIDE VIEW



AERO, SIDE VIEW

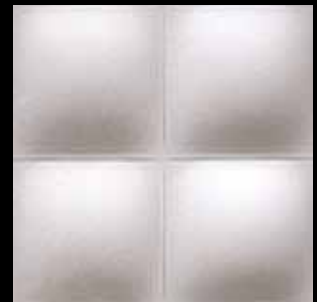
## OPTIONAL FINISHES



Clear



Firefrost



Metallic Titanium White Color





# Freeform

Textureless dimensional patterns which allow greater light transmission.

### PORTFOLIO EXAMPLES

- Tiffany's 1
- Hayden Ferry Lakeside LLC 4
- Bridgepoint 7, 18
- Shangri-la Hotel 8
- Chukchansi Casino 9
- Agua Caliente 9
- Eastside Cannery 17
- Snoqualmie Casino 19



Cathedral



Micro Cathedral



Channel



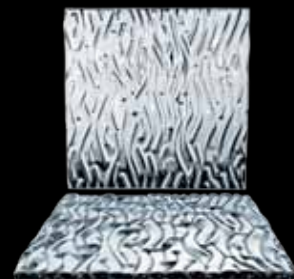
Crosschannel



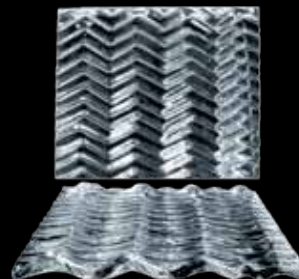
Koil



Maze



Stream



Veer



Willow

# Venetian

Venetian's remarkably deep dimensional patterns use 100% textured surfaces, with Serpentine shapes. Ideal in locations needing privacy.

### PORTFOLIO EXAMPLES

- Club H Fitness ONLINE



Serpentine A



Serpentine D



Serpentine E



# Sphere

## COLORS

Spheres are attached to clear or cast glass panels.

Standard sphere diameters are 1.5", 2", and 3"; custom up to 24".

Spheres are available in Clear, Low Iron, Tints, Silver/Gold Leaf, and Fusion.

- PORTFOLIO EXAMPLES
- Republic Gastropub 8
  - Denver News Agency 10
  - Mirage Hotel 10
  - Eastside Cannery 16



Clear



Aqua Blue



Blue



Green



Grey



Bronze



Silver Leaf



Gold Leaf



Fusion

## SHAPES



Sphere



Spheredrop



Tripsphere



Quadrasphere



Diasphere



Pentaspere



Hexaspere



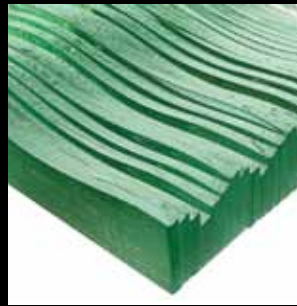
# Stax

Named after the way each piece is stacked then fused together, Stax Series offers another ingenious option to create exterior feature walls over very large surfaces, or to be featured as column/bar cladding.

PORTFOLIO EXAMPLES  
Simon Restaurant & Lounge 16



Beamz

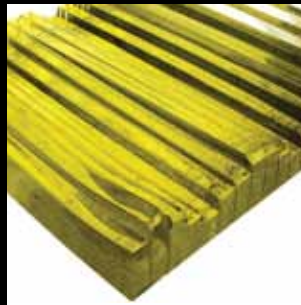


Breez

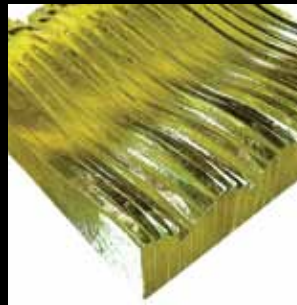


Flex

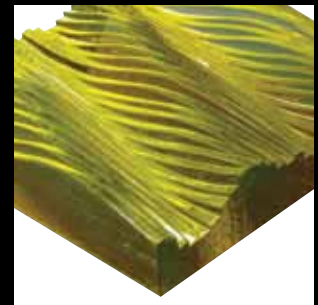
## OPTIONAL: AMBER COLOR AND MIRROR



Beamz



Breez



Flex

# Heavy

Solid glass from 1" to 4" thick with textures not only on the bottom, but also on the sides.

PORTFOLIO EXAMPLES  
Terminal City 15  
Naples Grande & Club 15



2" Clear



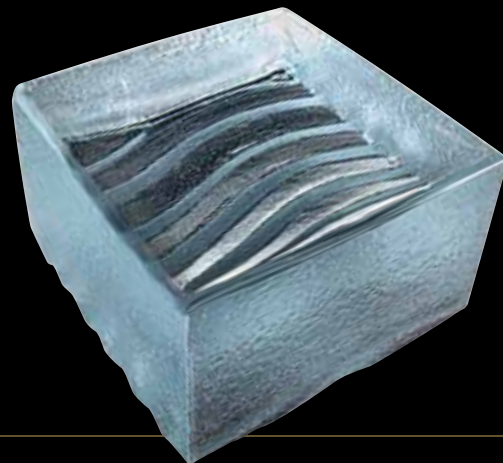
2" Low Iron



2" Low Iron Glass with White Metallic finish



2" Low Iron Glass with Red Metallic finish





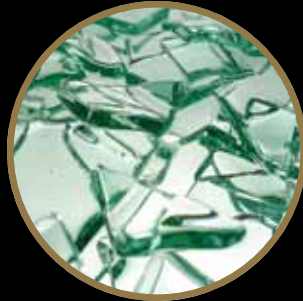
# Crackle

Icy chunks of Low Iron glass are melted onto a substrate panel, which is then laminated to a background mirror.

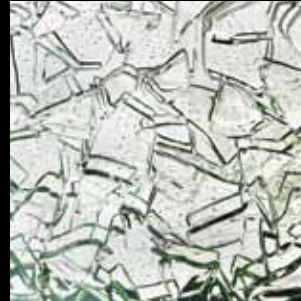
PORTFOLIO EXAMPLES  
Mauboussin 3



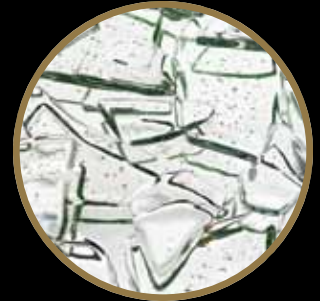
Clear Glass



SIDE DETAIL



Low Iron



SIDE DETAIL

# Treads

## GLASS SANDPAPER

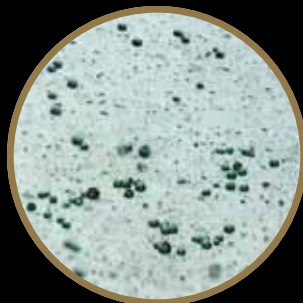
Glass Sandpaper provides extra grip for shoe treads, does not erode, and is easy to clean. It has tested highly in laboratories for co-efficient friction ratings in both wet and dry conditions.

## SILKEN

Silken Series patterns provides extra grip for shoe treads. Our combined Patterned/Opacity surfaces are bonded to the glass surface and laboratory tested to exceed ADA requirements for slip-coefficiency. Durable and easy to clean, each surface pattern is complete with a lightly etched coating to automatically provide a privacy feature.



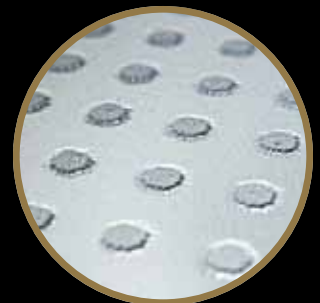
Clear (textureless)



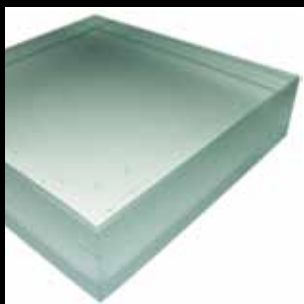
SURFACE



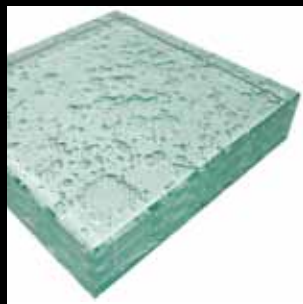
Pixel



SURFACE



Opacity



Cast Texture

PORTFOLIO EXAMPLES

- Big D 13
- Private Glass Bridge 12
- University of Utah 12



# Lucent



Raspberry



Red



Amber



Cognac



Copper



Lime



Green



Teal



Aqua Blue



Cobalt Blue



Violet

# Gemstone

Available in translucent or opaque finish



Red



Cognac



Aqua Blue



Cobalt Blue



Gold



Silver

# Metallic



Bordeaux



Green Mist



Titanium White



Marine Blue



Seashell Grey



Ebony

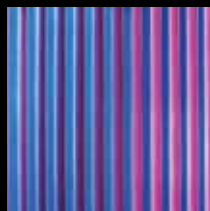
# Duotone



Amber/Green on Willow Texture



Red/Amber on Mirage Texture



Red/Cobalt on Sawtooth Texture



Cobalt/Aqua on Stratos Texture



Green/Aqua on Stratos Texture



# Organic



Natural



Sandstone



Pebble



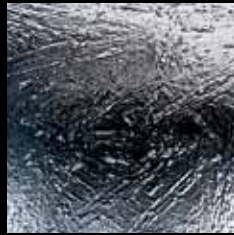
Pica



Sweep



Parchment



Azteca



Fossil



Aggregate



Aurora



Europa



Miranda



Sedona



Santos



Lava



Delta



Citadel



Citadel Dichroic



Bamboo

PORTFOLIO EXAMPLES  
Box Packaging 11  
Dell Children's  
Medical Center 11

# West Coast



Shale



Slate



Rocky Mountain



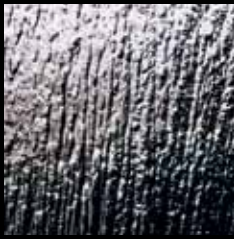
Regatta



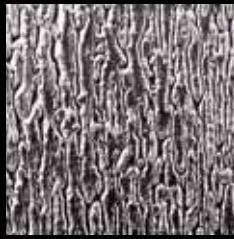
Boulder



# Directional



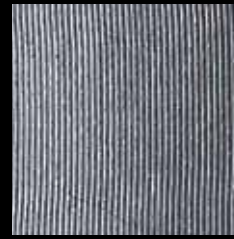
Icicle



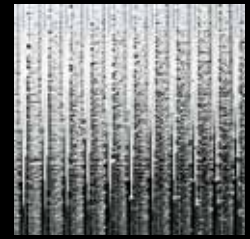
Cascade



Cascade XL



Linear



Linear XL



Icicle Rain



Rain



Sandtide Fine



Sandtide Coarse



Sahara



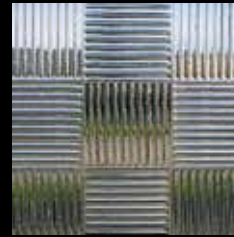
Aladdin



Adobe



Microfibre



Crossreed



V Tec



Weave



Checkerboard



Castle



Wave



Mirage



Sawtooth



Stratos



Argyle



Wavelet

- PORTFOLIO EXAMPLES
- Hayden Ferry Lakeside 5
  - Hyatt Regency 6
  - Denver News Agency 7
  - Chukchansi Casino 9
  - Dell Children's Medical Center 11
  - Snoqualmie Casino 14
  - Harrison Hot Springs 19
  - Tigh Na Mara Resort 19
  - Marriot Marquis Hotel 20



# Embossed



Callisto



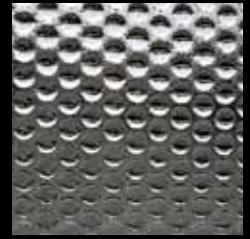
Blizzard



Champagne



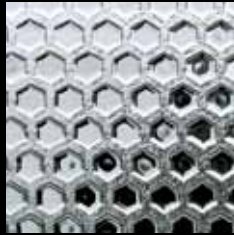
Washer



Omni



Arch



Honeycomb



Factory Square



Arctic Ice



Pyramid



Pinwheel



Diamondplate

## PORTFOLIO EXAMPLES

Box Packaging 11

Dell Children's

Medical Center 11

# Geometric



Spiro



Tennis



Interlock



Shingle



Hex



Cubes